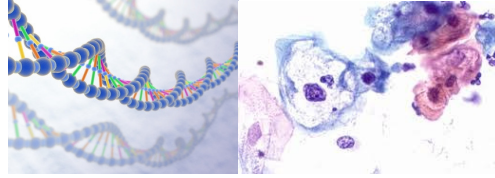


# INTENSIVE TRAINING WEEK COURSE IN GYNAE CYTOPATHOLOGY

[The National Gynaecology Cytology Training Centre  
in association with the Faculty of Pathology, RCPI]



Venue: Department of Cytopathology,  
The Coombe Women and Infants University Hospital, Dublin.

Dates: To be confirmed, 2015

We are pleased to announce intensive one week training courses in Gynae Cytopathology. This course will be delivered by distinguished international and national faculty working in the area of gynae cytopathology. The course comprises 5 days of intensive instruction in all aspects of Gynae cytopathology and includes real-life cases, histology cytology correlation, use of HPV and predictive biomarkers and sessions on cervical screening, colposcopy, health economics and molecular biology. Places for 6 trainees are available per session. A national and international faculty will deliver the course.

*In order to prepare for the course, a set of 5 slides is available for examination by course attendants, in order for pre-enabling assessment to be performed. In addition, course material will be available for revision after the formal one week course. It is anticipated that a virtual web image library will be available in 2015 for additional case review.*

The day will run from 8am to 5 pm. The afternoon session will largely be dedicated to 'eye on glass' review of cases and discussion with trainers and senior cytotechnologists.

## **Day 1: Introduction to gynae cytopathology and definition of learning objectives and outcomes**

- the normal smear
- cytoscreening
- thin prep smears
- conventional thick layer methods
- smear taking, smear making, adequacy and representation
- QA and gynae cytology
- manual and automated screening
- the role of HPV testing
- the use of predictive biomarkers
- new biomolecular tools in cervical screening [new wave technologies]
- information systems and logistics
- histology: cytology correlation
- how to organise a cervical screening programme
- review of normal cytology and histology [multi-head teaching session with pathologist and lab chief]

**Day 2:**

- infections, inflammatory changes, repair
- mimics of CIN and cGIN
- borderline/ASCUS abnormalities: definitions and concepts
- national guidelines for gynae cytopathology [CervicalCheck]
- how to report a smear test
- review of infections, inflammatory changes and repair [multi-head teaching session with pathologist and lab chief]

**Day 3:**

- squamous intra-epithelial lesions [SILs]
- criteria for mild, moderate and severe dyskaryosis
- mimics of SIL
- the malignant smear [squamous]
- how to report and manage SILs
- reporting misses with SILs
- the role of colposcopy in the management of SILs
- review of SILs [multi-head teaching session with pathologist and lab chief]

**Day 4:**

- glandular lesions (GIN) [cervical, endometrial and ovarian]
- mimics of GIN lesions
- the malignant smear [glandular]
- how to report and manage GIN
- reporting misses with GIN
- the role of colposcopy in the management of GIN lesions
- review of GIN lesions [multi-head teaching session with pathologist and lab chief]

**Day 5:**

- the health economics of cervical screening
- quality and cervical screening
- how to become competent reporting gynae cytopathology
- histology: cytology correlation [performance metrics]
- how to run a gynae cytology MDT
- poor screening performance [how to spot it and correct it]
- accreditation
- national and international EQA schemes
- 10 case test set [proficiency test]
- course summary

**Post-course activity**

- scheduled visits for additional material review